

PRSR1 STD  
U.S. POSTAGE  
**PAID**  
DENVER, CO  
PERMIT NO. 631

DENVER PUBLIC WORKS  
201 W. COLFAX AVE.  
DEPT. 608  
DENVER, CO 80202



DENVER  
THE MILE HIGH CITY

**PUBLIC WORKS**



PRINTED ON RECYCLED CONTENT PAPER.  
PLEASE RECYCLE.



# our plan is clear.

## DENVER SNOW REMOVAL 2008-09

PRESENTED BY:



DENVER  
THE MILE HIGH CITY

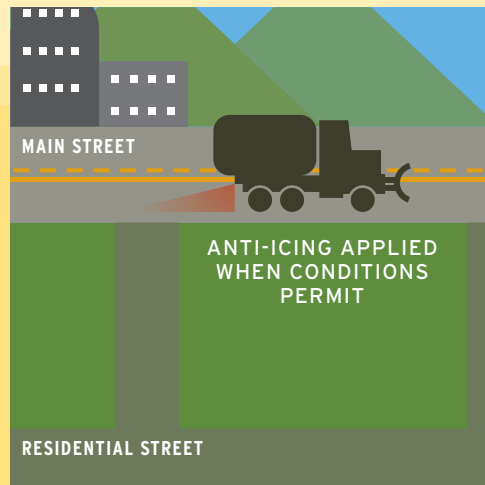
**PUBLIC WORKS**

*Protecting the Present and Building for the Future*

# SNOW REMOVAL:

## How we keep Denver's streets clear.

### SNOW PREDICTED



#### HOW WE RESPOND:

- Anti-icing applied only to main streets when conditions permit to prevent snow from bonding to the pavement

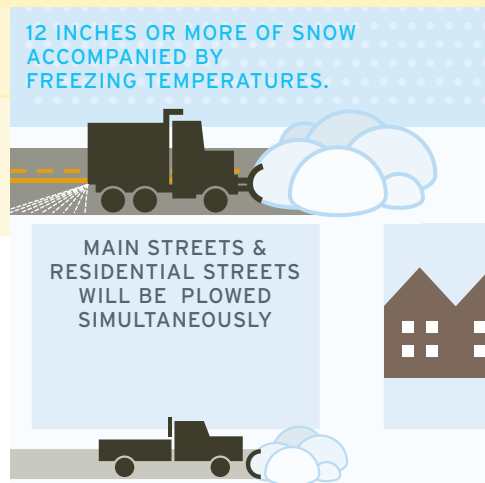
### SNOW BEGINS TO FALL



#### HOW WE RESPOND:

- De-icing applied only to main streets to prevent the snow from building up and turning into ice
- Main streets plowed by heavy plows

### MAJOR SNOW EVENT



#### HOW WE RESPOND:

- De-icing applied only to main streets
- Main streets plowed by heavy plows
- Residential streets plowed by light plows

### Bring on the snow, we'll keep you moving

- For your safety, main streets, or most streets with stripes, are the number one priority for Denver Public Works and our heavy plows.

### Major snow events

- A major snow event occurs when 12 inches or more of snow falls between November 15 and March 15 accompanied by freezing temperatures.
- During major snow events we will deploy light plows (pick up trucks mounted with plows) to simultaneously plow residential streets.
- The light plows will plow one lane down the center of neighborhood streets and will not apply any de-icing material.
- Pushing snow onto sidewalks and driveways is an unfortunate consequence of plowing any street. We apologize for any inconvenience and ask everyone to work together to clear neighborhood walkways.

### Here's how you can help

- Homeowners are required to clear their walkways within 24 hours and businesses/apartment building owners are required to clear walkways within four hours after snow stops falling.
- Check on elderly or disabled neighbors.
- Go the extra step to make sure the sidewalk on your block is clear of snow so it can be accessible to all.
- Be sure trash and recycling containers are visible; not buried under snow.

### How to Stay Informed

Denver Metro Road Conditions, Dial - 511 [www.cotrip.org](http://www.cotrip.org)

Denver City Services, Dial - 311 [www.denvergov.org/311](http://www.denvergov.org/311)

Para informacion en español, llame al - 311

For details on Denver's snow removal plan:

[www.denvergov.org/Street\\_Maintenance](http://www.denvergov.org/Street_Maintenance)

### SHARE THE WARMTH WITH A SPECIAL OFFER FROM MCDONALD'S

bring on the cold, we'll keep you warm

Buy One Small McCafé® Coffee,  
**Get One FREE**

When you present this coupon at the listed McDonald's® with our compliments.

Expires: March 31, 2009

**i'm lovin' it®**  
Redeemable Only At:  
Any Participating  
McDonald's®  
in Denver, CO &  
The Front Range

Current participation based on independent operator decision. Present certificate before ordering. One free item per certificate. Limit one certificate per person per visit. Certificate void if transferred, copied or duplicated in any way or transmitted via electronic media. Valid when product served. © 2008 McDonald's VOX 252207-10