

SNOW REMOVAL IS A BIG DEAL TO US –

after all, if you can't go to work, or to the store – or anywhere else, it's bad news for Denver.

Clear streets don't just make for easy transportation, they contribute enormously to our economic health.

Denver Public Works is committed to service.

You can count on us to provide snow removal with our network of vehicles and professional operators even in the harshest of weather. Our services have earned Denver an international reputation as a beautiful, clean and environmentally conscious city that thrives during the winter months.

Public Works is a diverse department that shares a common goal: preserving Denver as a great place to live, work and visit!

PRSRT STD
U.S. POSTAGE
PAID
DENVER, CO
PERMIT NO. 631

DENVER PUBLIC WORKS
201 W. COLFAX AVE.
DEPT. 608
DENVER, CO 80202



DENVER
THE MILE HIGH CITY

311
for City Services
Denver gets it done!

PRINTED ON RECYCLED CONTENT PAPER.
PLEASE RECYCLE.



we got your drift.

DENVER SNOW REMOVAL 2007-08

PRESENTED BY:

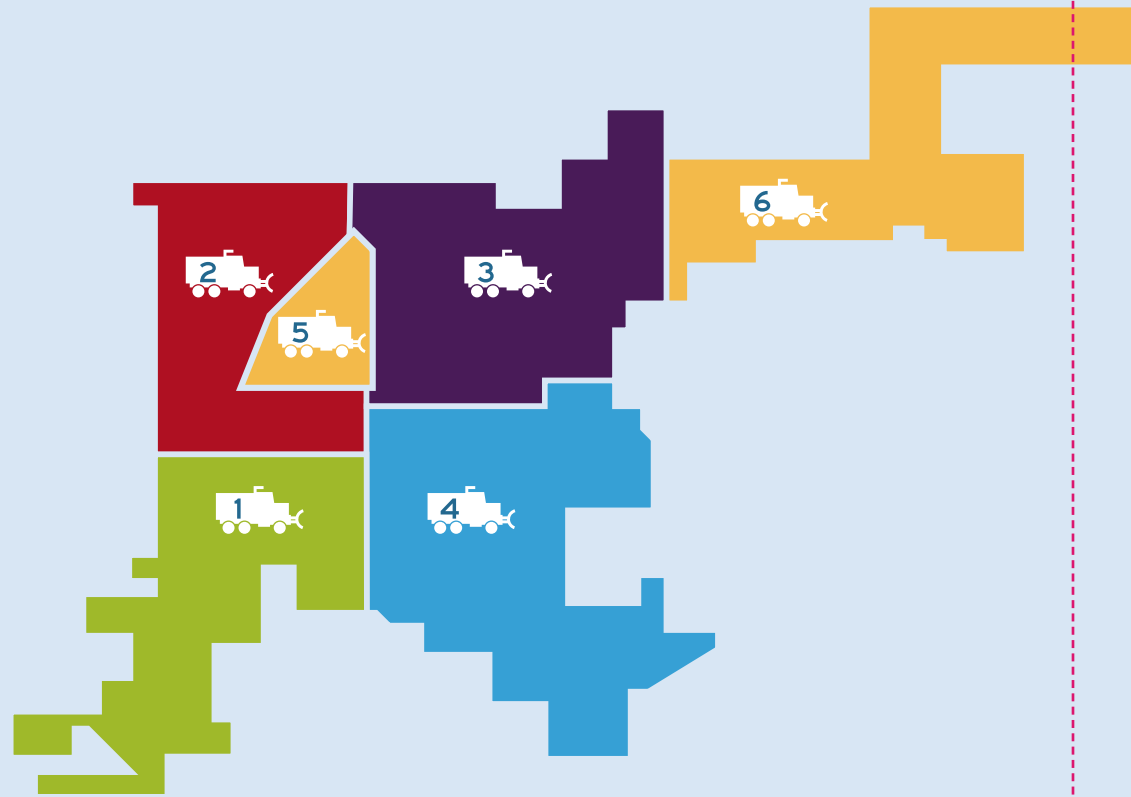


DENVER
THE MILE HIGH CITY

PUBLIC WORKS

Protecting the Present and Building for the Future

SNOW DISTRICTS



ALL SIX DISTRICTS WITHIN THE CITY OF DENVER ARE PLOWED SIMULTANEOUSLY

CUTTING MAJOR SNOW EVENTS DOWN TO SIZE

A major snow event is defined as a foot or more of snow between November 15 and March 15 accompanied by freezing temperatures. Denver Public Works has expanded our snow removal plan to provide the best service to our residents while modeling efficiency as a department.

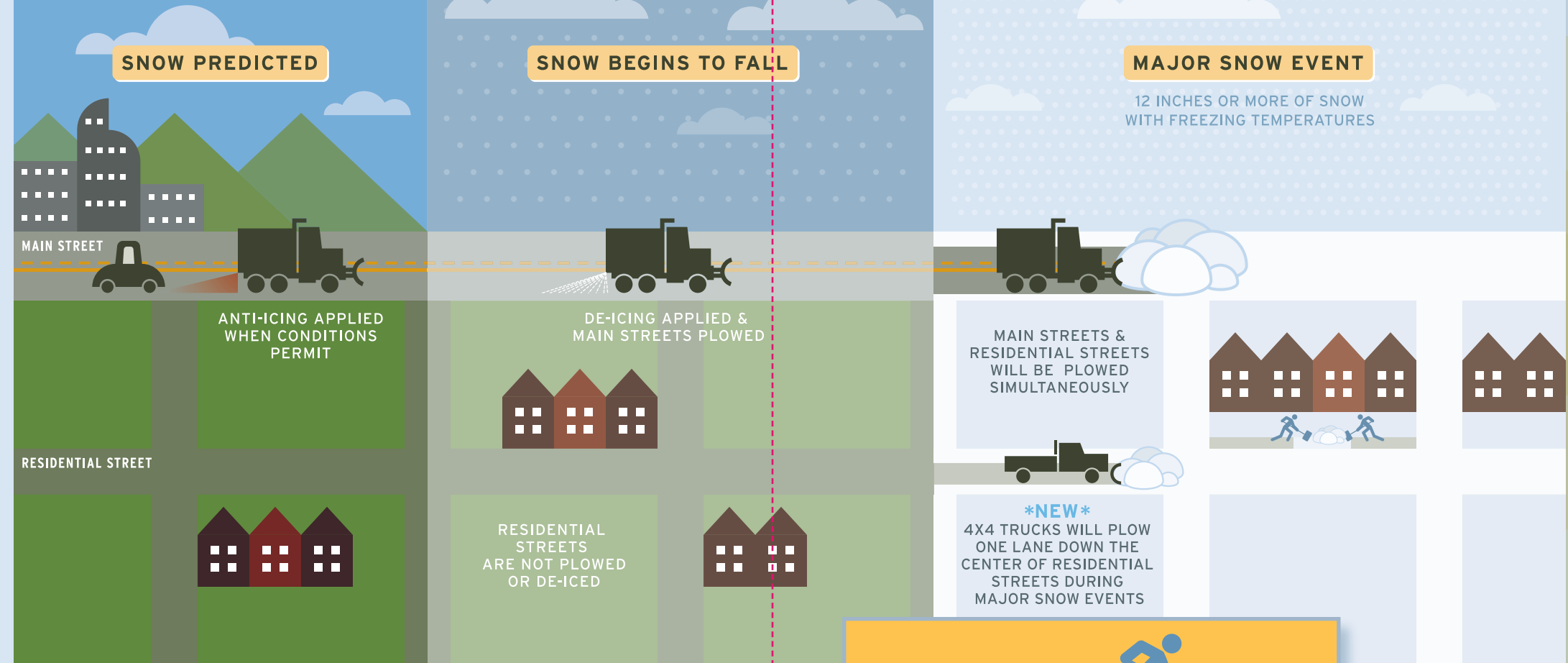
EVER-CHANGING WEATHER SYSTEMS REQUIRE EVER-CHANGING PLANS

Main streets, or streets with stripes, are the priority for Public Works and our largest plows. These are the streets that carry most of the city's traffic as well as emergency vehicles and public transportation.

NEW FOR THIS WINTER - Starting this year, during major snow events we will also deploy up to 110 4x4 plows to simultaneously clear residential, or neighborhood, streets. Denver's never had a plan like this and we know it will make a huge difference.

In order to clear the most streets in the shortest time, one lane will be plowed down each residential street. If you can park in a garage or off-street during these times, please do so.

SNOW REMOVAL PROCESS TIMELINE



SNOW ROUTES

NEW FOR THIS WINTER - There will no longer be additional parking restrictions on Snow Routes – just follow the posted parking rules, even during the worst storms. If your car is parked legally, you will not receive a ticket.

MORE ATTENTION FOR BUS STOPS AND CURB RAMPS

NEW FOR THIS WINTER - As part of the clean up at the end of every snowfall, plows will clear the pavement in front of bus stops and curb ramps on main streets as needed.

WE NEED YOUR HELP, TOO

For your safety and the safety of others, homeowners are required to clear their walkways within 24 hours and businesses/apartment building owners are required to clear walkways within four hours after snow stops falling. The City will remove snow from walkways around City-owned property, such as parks.

NEW FOR THIS WINTER - The Public Works Manager *may* suspend these rules for up to 72 hours during a major snow event.

For details on Denver's snow removal plan:
www.denvergov.org/Street_Maintenance



YOU CAN ALSO HELP IN THESE WAYS:

- Check on elderly or disabled neighbors – what's an inconvenience to you could be dangerous or even life-threatening to them.
- Go the extra step to make sure the sidewalk on your block is clear of snow so it can be accessible to all.
- Give plows room to work and park off-street if you can until they've cleared your block.
- Be sure trash and recycling containers are visible; not buried under snow. Also, shovel a path to these containers and keep them off patches of ice for safety.

HOW TO STAY INFORMED

Denver Metro Road Conditions, Dial – 511
www.cotrip.org

Denver City Services, Dial – 311
www.denvergov.org/311

Para informacion en español, llame al – 311